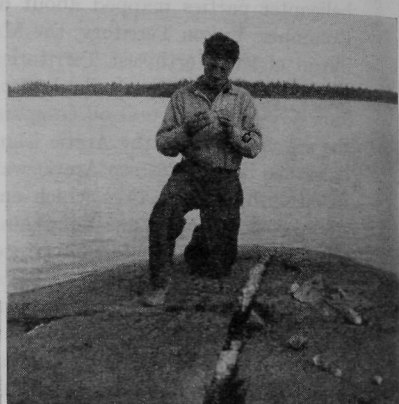


FIELD GEOLOGY

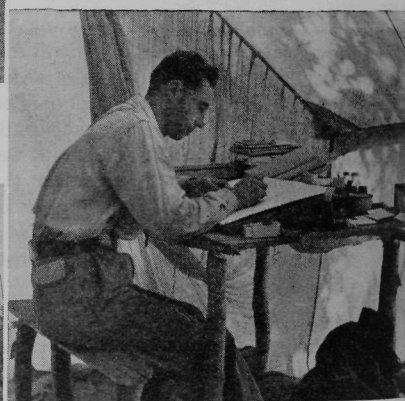
◀ Investigating a sheer drop in the rugged interior of British Columbia.



▲ Geologist examining an outcrop with a quartz vein in the Yellowknife area of the Northwest Territories.



▲ An Arctic campsite—here, as in all remote and otherwise inaccessible areas the helicopter is essential as a transport vehicle.



Geological findings are plotted on maps at field camps.



◀ Typical Canadian Shield country—much of which is now undergoing initial geological reconnaissance mapping.